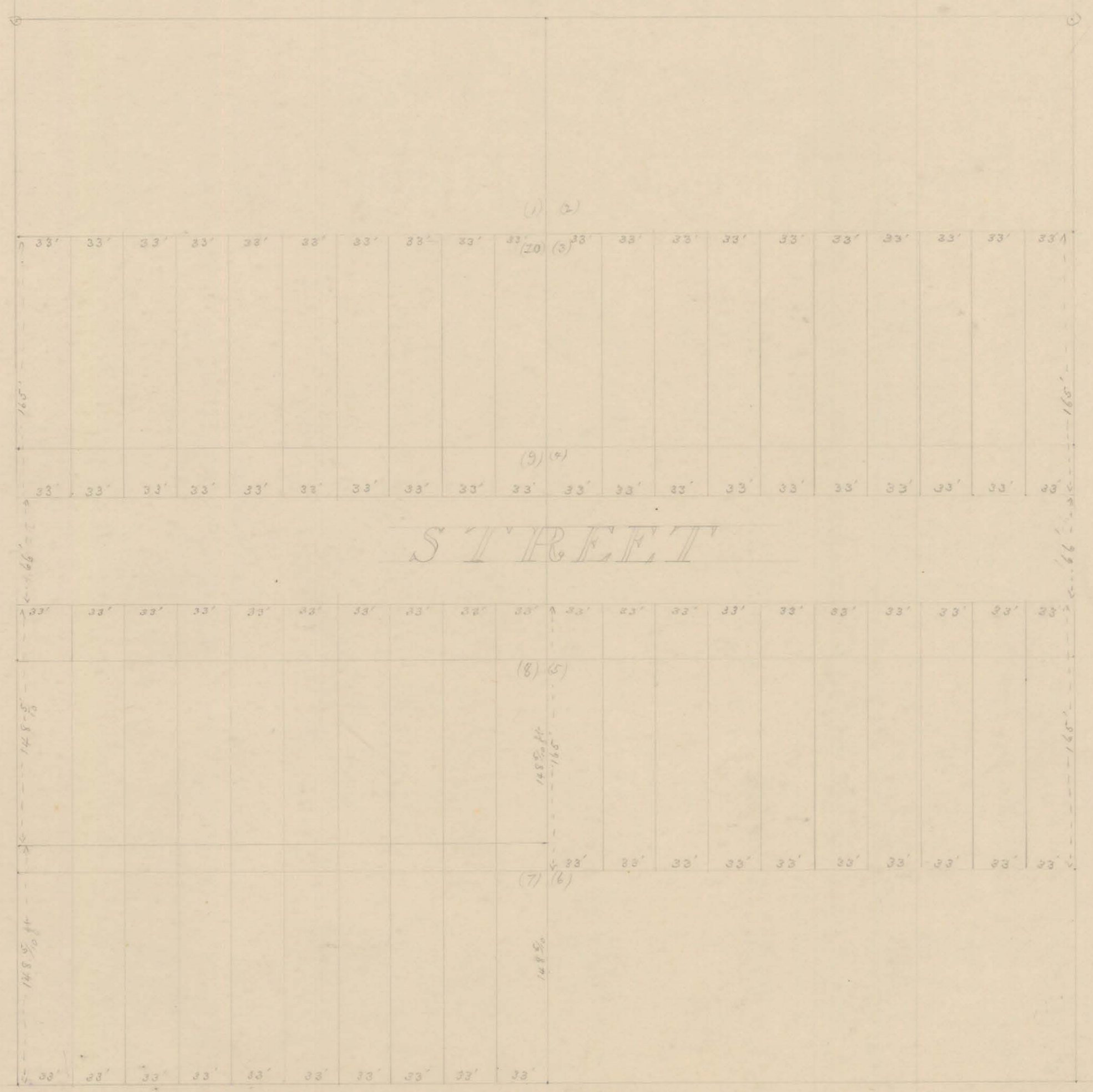


EIGHTH  
SEVENTH STREET



T. CHAMBERLAIN

Re-arrangement of

LOTS 3-4-5-7-8-9 and 10

in

BLOCK 17- PLAT "C"

ODDEN CITY SURVEY

DEC. 1888

Scale 4 Rods to 1 inch

Second  
FIRST EAST

SECOND EAST

SEVENTH  
EIGHTH STREET